



Cervical Solutions

# ROI-C<sup>®</sup>

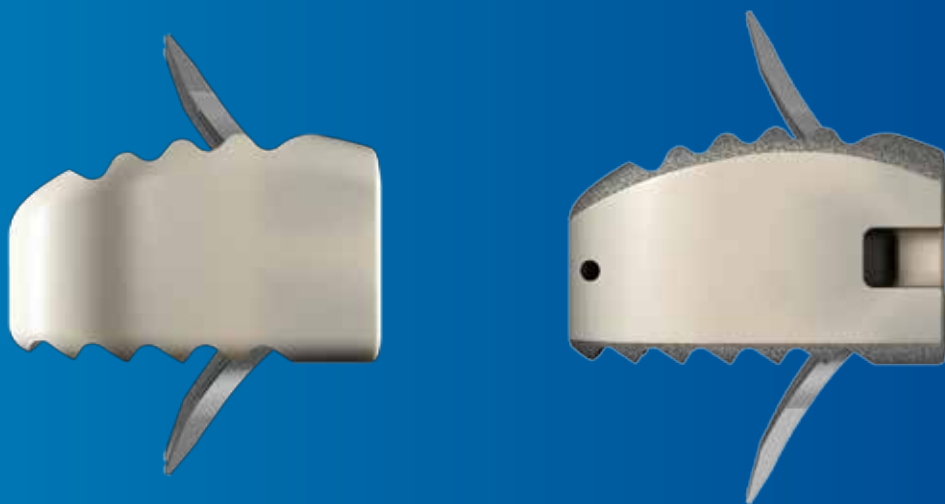
## Cervical Cage

with  
**VerteBRIDGE<sup>®</sup>**  
PLATING TECHNOLOGY

ROI-C featuring VerteBRIDGE plating is a zero-profile, stand-alone\* cervical cage, with streamlined instrumentation and surgical technique, requiring minimal exposure.

# Elegance IN SIMPLICITY

ROI-C with VerteBRIDGE plating offers a sleek and minimalistic stand-alone solution. Streamlined instrumentation functions in-line with the disc space, requiring minimal exposure, while an innovative implant design leaves minimal hardware in the patient, all without sacrificing stability.



## PRODUCT FEATURES



### Simplicity

- Ease of use: the ROI-C surgical technique requires fewer steps than a traditional ACDF (with plate and screws).
- A mini open technique allows for less retraction.
- ROI-C with VerteBRIDGE offers a complete solution for an anterior cervical fusion.
- No hardware whatsoever protrudes anterior of the vertebral body.



### Confidence

- With two geometries and more footprints than any other competitive product, surgeons can select the perfect fit for any anatomy.
- PEEK® and Titanium-coated PEEK® accommodate surgeon choice and preference.
- Streamlined instrumentation alleviates challenges of patient anatomy such as the chin.
- Large fit and fill of available footprints provides initial stability, while self-locking plates are designed for initial and long-term stability.



### Experience

- Over 80,000 implantations performed using VerteBRIDGE plating.
- Biomechanical testing demonstrates that ROI-C with VerteBRIDGE plating performs at a similar level to other products on the market.
- ROI-C with VerteBRIDGE plating is the stand-alone\* market leader.

## BIOMECHANICAL STABILITY

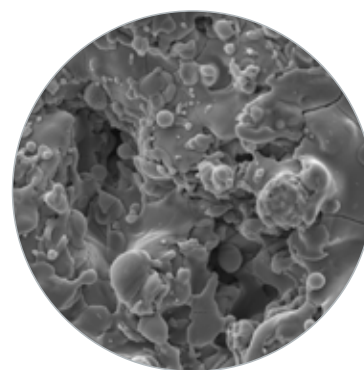
In biomechanical testing performed to compare the stability of ROI-C to a competitive PEEK® cage and metal cervical plate, the ROI-C construct significantly reduced the range of motion in all directions versus the intact state. In flexion-extension, lateral bending, and axial torsion, the ROI-C with VerteBRIDGE Plating showed lower ROM<sup>1</sup> than published data of conventional construct.

## TITANIUM COATING



Serrated ridges help stabilize the implant

- ROI-C Titanium has up to 120 µm of porous, plasma-sprayed titanium on both the serrated endplate-facing surfaces



750x magnification of the titanium-coated surface

- PEEK-OPTIMA® cage with titanium coating provides the benefits of biocompatible titanium, while still allowing for postoperative radiographic imaging.

## ROI-C SIZING OPTIONS

### Lordotic

Designed to allow close contact with the bone of patients with flattened endplates.

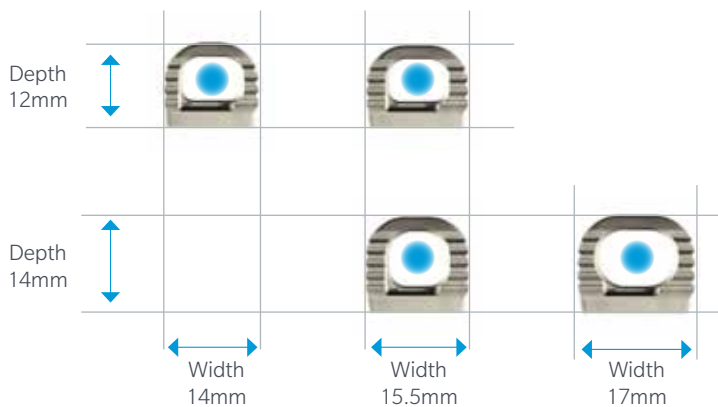


### Anatomic

Features a superior edge that complements healthy endplate contours.



### 4 Footprints



*Industry leading range of shapes, surfaces, footprints, and heights to fit diverse anatomy.*



## ROI-C CERVICAL CAGES SIZING CHART

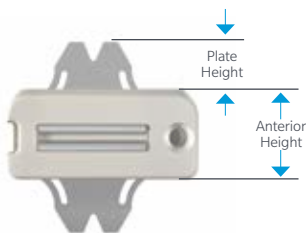
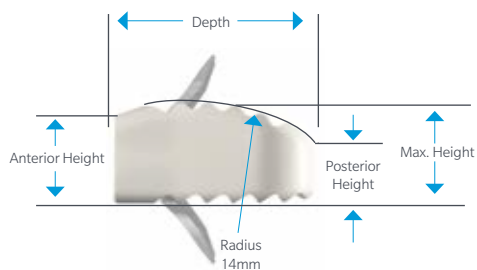
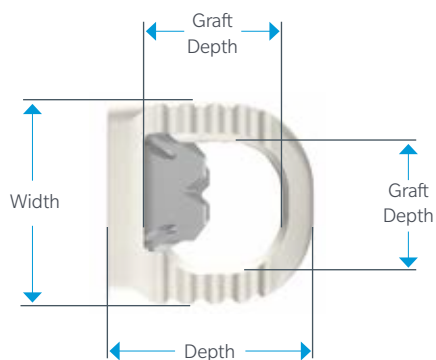
Lordotic	REF NUMBER	SIZE (MM)	HEIGHT (MM)		GRAFT VOL. (CC)
		(DEPTH X WIDTH)	ANTERIOR	POSTERIOR	
MC 1441 P	12X14, H5	5	2.3	0.3	
MC 1442 P	12X14, H6	6	3.1	0.35	
MC 1443 P	12X14, H7	7	4.1	0.41	
MC 1444 P	12X14, H8	8	5.1	0.47	
MC 1445 P	12x14, H9	9	6.1	0.53	
MC 1446 P	12x14, H10	10	7.1	0.59	
MC 1451 P	12X15.5, H5	5	2.3	0.3	
MC 1452 P	12X15.5, H6	6	3.1	0.35	
MC 1453 P	12X15.5, H7	7	4.1	0.41	
MC 1454 P	12X15.5, H8	8	5.1	0.47	
MC 1455 P	12x15.5, H9	9	6.1	0.53	
MC 1456 P	12x15.5, H10	10	7.1	0.59	
MC 1421 P	14X15.5, H5	5	2.4	0.36	
MC 1422 P	14X15.5, H6	6	3.2	0.42	
MC 1423 P	14X15.5, H7	7	4.2	0.49	
MC 1424 P	14X15.5, H8	8	5.1	0.47	
MC 1425 P	14x15.5, H9	9	6.2	0.53	
MC 1426 P	14x15.5, H10	10	7.2	0.72	
MC 1431 P	14X17, H5	5	2.4	0.36	
MC 1432 P	14X17, H6	6	3.2	0.52	
MC 1433 P	14X17, H7	7	4.2	0.61	
MC 1434 P	14X17, H8	8	5.2	0.71	
MC 1435 P	14x17, H9	9	6.2	0.8	
MC 1436 P	14x17, H10	10	7.2	0.89	

Anatomic	REF NUMBER	SIZE (MM)	HEIGHT (MM)		GRAFT VOL. (CC)
		(DEPTH X WIDTH)	ANTERIOR	MAXIMUM	
MC 1341 P	12X14, H5	5	5.5	3	0.31
MC 1342 P	12X14, H6	6	6.5	4	0.36
MC 1343 P	12X14, H7	7	7.5	5	0.41
MC 1344 P	12X14, H8	8	8.5	6	0.45
MC 1351 P	12X15.5, H5	5	5.5	3	0.31
MC 1352 P	12X15.5, H6	6	6.5	4	0.36
MC 1353 P	12X15.5, H7	7	7.5	5	0.41
MC 1354 P	12X15.5, H8	8	8.5	6	0.45
MC 1321 P	14X15.5, H5	5	5.9	3	0.42
MC 1322 P	14X15.5, H6	6	6.9	4	0.48
MC 1323 P	14X15.5, H7	7	7.9	5	0.54
MC 1324 P	14X15.5, H8	8	8.9	6	0.60
MC 1331 P	14X17, H5	5	5.9	3	0.51
MC 1332 P	14X17, H6	6	6.9	3	0.60
MC 1333 P	14X17, H7	7	7.9	5	0.67
MC 1334 P	14X17, H8	8	8.9	6	0.75

## ROI-C IMPLANT DESIGN

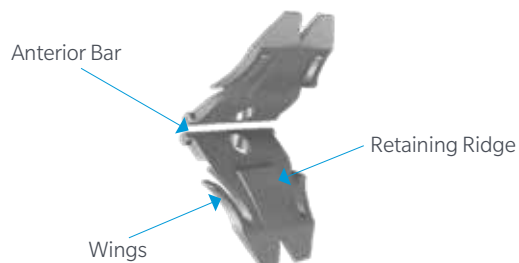


1 mm from center of Tantalum marker to the posterior edge.



## ROI-C PLATES

### THREE LOCKING MECHANISMS



## ROI-C PLATE SELECTION TABLE

### Select the plate length according to the implant height

- Use ROI-C Standard Plates (MC1007T, two plates/box)† with implant heights 5-7mm
- Use ROI-C Long Plates (MC1008Tm two plates/box)† with implant heights 8-10mm

#### ROI-C ANATOMIC

Implant Height (mm)	H5	H6	H7	H8
Plate Size	Standard (MC1007T)			Long (MC1008T)
Plate Height (MM)	5.5	5.0	4.5	5.6

#### ROI-C LORDOTIC

Implant Height (mm)	H5	H6	H7	H8	H9	H10
Plate Size	Standard (MC1007T)			Long (MC1008T)		
Plate Height (MM)	5.7	5.3	4.8	5.9	5.4	4.9

† MC1007T and MC1008T are part numbers for individual standard and long plates, respectively.

**References:**

1. "Cadaveric Biomechanical Evaluation of the ROI-C Cervical Cage with VerteBRIDGE Plating Technology" LDR  
REF: IR-CT 1 EN 12.2010 B US

\*In cases of trauma, vertebral instability, or significant bone removal, the ROI-C implant should be augmented with additional supplemental fixation.



**ZIMMER BIOMET**  
Your progress. Our promise.®

800.447.3625 / [zimmerbiomet.com](http://zimmerbiomet.com)

©2017 Zimmer Biomet Spine, Inc. All rights reserved.

All content herein is protected by copyright, trademarks and other intellectual property rights owned by or licensed to Zimmer Biomet Spine, Inc. or one of its affiliates unless otherwise indicated, and must not be redistributed, duplicated or disclosed, in whole or in part, without the express written consent of Zimmer Biomet Spine. This material is intended for health care professionals and the Zimmer Biomet Spine sales force. Distribution to any other recipient is prohibited.

PEEK CLASSIX is a trademark of Invivo Biomaterial Solutions.

IR-C B 6 Rev B 07.2017