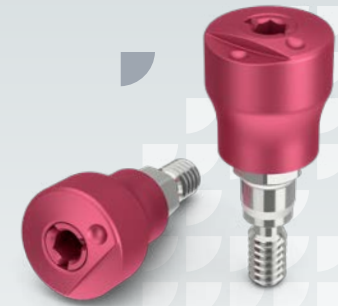


Encode® Emergence Healing Abutments Reference Sheet



Certain® Encode® Emergence Healing Abutment Screw

REF **IEEHA465**
 LOT Lot Number
 4.1mm(D) X 6mm(P) X 5mm(H)

STERILE R yyyy-mm-dd

Biomet 3i LLC
 4555 Riverside Drive
 Palm Beach Gardens, FL, 33410,
 USA

<http://labeling.zimmerbiomet.com>

0001

- I: Certain** Implant Connection
- EEHA:** Encode Emergence Healing Abutment
- 4:** Platform Diameter
- 6:** Emergence Profile Diameter
- 5:** Abutment Height
- Screwdrivers:** PHD02N and PHD03N
- Driver Tips:** RASH3N, RASH8N
- Torque Wrench:** L-TIRW



TSX™/TSV® Encode Emergence Healing Abutment Screw

REF **TEEHA355**
 LOT Lot Number
 3.5mm(D) X 5mm(P) X 5mm(H)

STERILE R yyyy-mm-dd

Biomet 3i LLC
 4555 Riverside Drive
 Palm Beach Gardens, FL, 33410,
 USA


<http://labeling.zimmerbiomet.com>

0001

- T: TSV** Implant Connection
- EEHA:** Encode Emergence Healing Abutment
- 3:** Platform Diameter
- 5:** Emergence Profile Diameter
- 5:** Abutment Height
- Screwdrivers:** HXGR1.25 and HXLGR1.25
- Driver Tips:** TW1.25 and TW1.25L
- Torque Wrench:** TWR


ORDERING INFORMATION:

Certain Connection Implants



Platform Diameter	Emergence Profile	Height		
		3	5	7
3.4	3.8	IEEHA343	IEEHA345	IEEHA347
	5.0	IEEHA353	IEEHA355	IEEHA357
4.1	4.1	IEEHA443	IEEHA445	IEEHA447
	5.0	IEEHA453	IEEHA455	IEEHA457
	6.0	IEEHA463	IEEHA465	IEEHA467
5.0	7.5	IEEHA473	IEEHA475	IEEHA477
	5.0	IEEHA553	IEEHA555	IEEHA557
	6.0	IEEHA563	IEEHA565	IEEHA567
6.0	7.5	IEEHA573	IEEHA575	IEEHA577
	6.0	IEEHA663	IEEHA665	-
	6.8	IEEHA6683	IEEHA6685	-
	7.5	IEEHA673	IEEHA675	-

TSX/TSV Connection Implants



Platform Diameter	Emergence Profile	Height		
		3	5	7
3.5	3.8	TEEHA333	TEEHA335	TEEHA337
	5.0	TEEHA353	TEEHA355	TEEHA357
	6.5	TEEHA363	TEEHA365	TEEHA367
4.5	4.5	TEEHA443	TEEHA445	TEEHA447
	5.5	TEEHA453	TEEHA455	TEEHA457
	6.5	TEEHA463	TEEHA465	TEEHA467
	7.5	TEEHA473	TEEHA475	TEEHA477
5.7	5.7	TEEHA553	TEEHA555	-
	6.8	TEEHA563	TEEHA565	-
	7.5	TEEHA573	TEEHA575	-

For more information, visit ZimVie.com

ZimVie
 4555 Riverside Drive
 Palm Beach Gardens, FL 33410
 Phone: +1-561-776-6700
 Fax: +1-561-776-1272



Unless otherwise indicated, as referenced herein, all trademarks are the property of ZimVie; and all products are manufactured by one or more of the dental subsidiaries of ZimVie Inc. (Biomet 3i, LLC, Zimmer Dental Inc., etc.) and marketed and distributed by ZimVie Dental (formerly Zimmer Biomet Dental) and its authorized marketing partners. For additional product information, please refer to the individual product labeling or instructions for use. Product clearance and availability may be limited to certain countries/regions. This material is intended for clinicians use only and does not comprise medical advice or recommendations. Distribution to any other recipient is prohibited. This material may not be copied or reprinted without the express written consent of ZimVie. ZV1175 REV A 05/23 ©2023 ZimVie. All rights reserved.

