



Efficient. Flexible.
Genuine.



GenTek®

Genuine Restorative
Components



 **ZimVie**



GenTek Genuine Restorative Components

Premium implants deserve premium prosthetic components. For long-term clinical success, it is essential that the interface between the implant and abutment are designed to work together. This is required to ensure a robust and stable interface that delivers the long-term aesthetics and function that patients demand.

GenTek Restorative Components are the solution for anyone who uses ZimVie Dental Implants. As part of an open digital workflow, genuine connection Ti-Bases¹ and Titanium Pre-Milled Abutment Blanks ensure the highest product quality and a precise fit through the integration of proven ZimVie Dental technologies. GenTek Restorative Components are available for ZimVie Dental Implant Systems: TSX[®]/TSV[®]/Trabecular Metal[®], T3[®] PRO/Certain[®], and Eztetic[®].





Features and Benefits

- GenTek Ti-Bases, Titanium Pre-Milled Abutment Blanks, and accessories are part of a complete and open digital workflow.
- Genuine connection Ti-Bases are compatible with CEREC[®] blocks² to meet your Sirona[®] chairside workflow need.

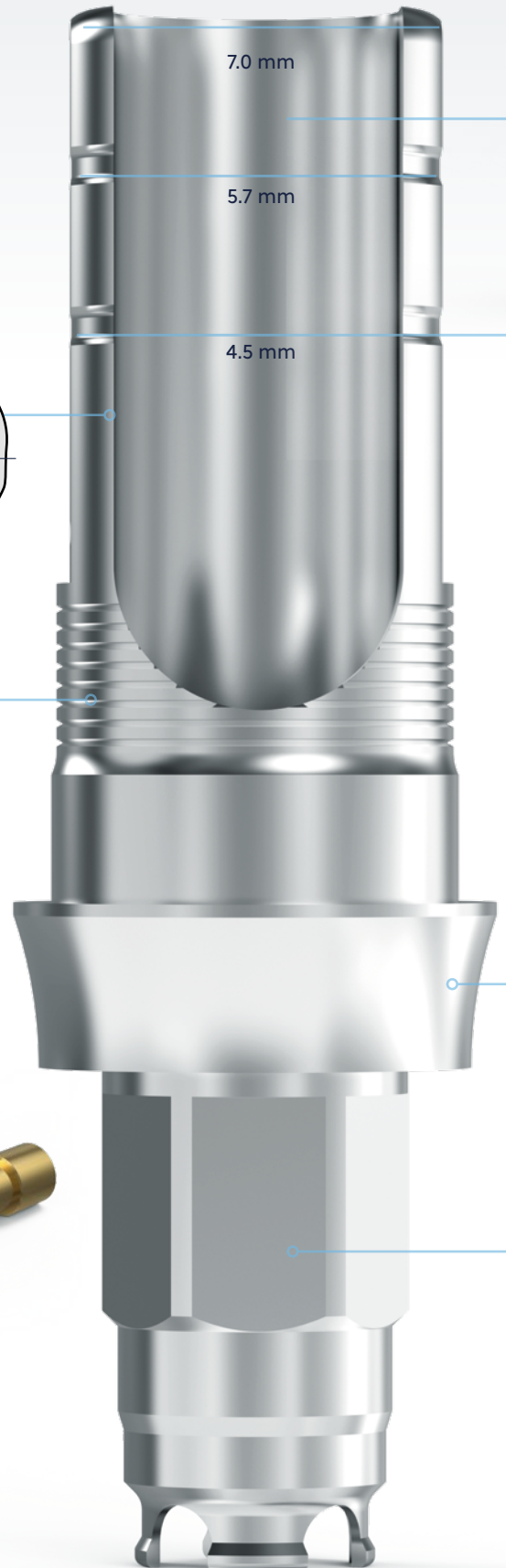


¹ Ti-Base also referenced as TiBase

² CEREC Blocks also named Sirona inCoris Meso Block

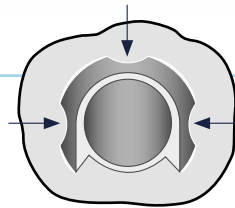


GenTek Angulated Screw Channel Ti-Bases



Anti-rotation feature

Three continuous anti-rotation grooves over the entire length of the post ensures better centering and reduces rotational movement of the crown to Ti-Base.

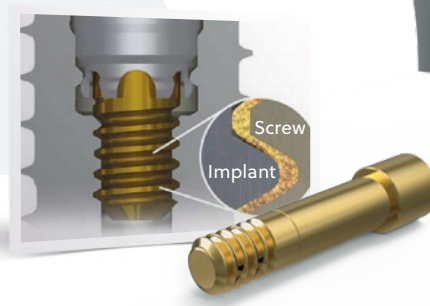


Retention grooves

For simplified cementation

SureSeal® Technology for the Certain Implant System

- Minimizes abutment micromotion and reduces potential microleakage
- Combination of the proprietary Gold-Tite® Screw and Certain Internal Connection



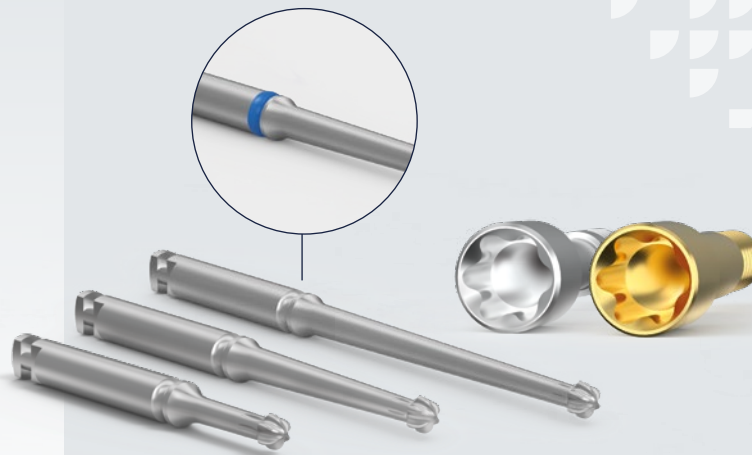
A Gluing Screw, provided with each GenTek Ti-Base, protects the screw channel from the inflow of glue into the screw channel while gluing the prosthetic restoration.





Enabled angles for versatility¹

Position the angled screw channel anywhere from 0° to 25° for improved aesthetics in anterior cases and better access in challenging inter-arch spaces.



Hexalobular screwdrivers and screws

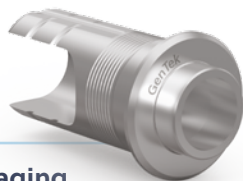
Screwdrivers feature a hexalobular design to allow for universal use, regardless of the ZimVie Dental Implant connection. Screwdrivers are available in three different lengths to accommodate a wide range of cases, and include an in-groove designed for dental ring placement for easy length identification.² Screws contain a hexalobe design to be used in conjunction with the drivers.³

Flexible post height for the body

One Ti-Base provides various post height options for individualized solutions.

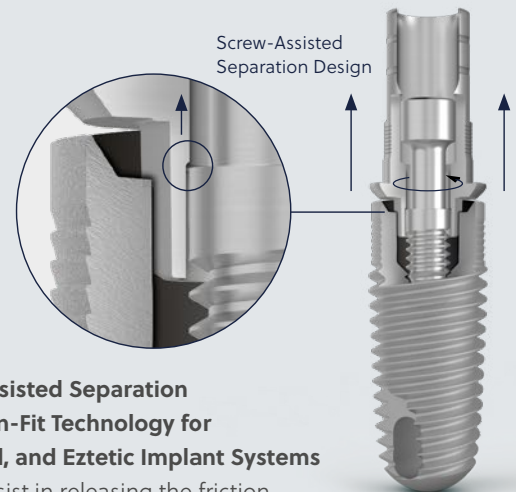


Three collar heights⁵



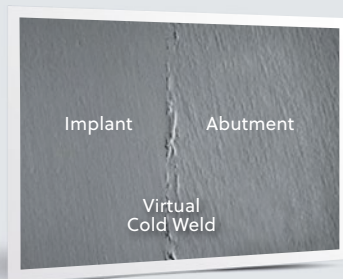
Non engaging Ti-Bases for bridges

GenTek Angulated Screw Channel Ti-Bases with a non-engaging connection allows for the freedom of rotation ideal for making bridges.



Patent-pending Screw-Assisted Separation Design, containing Friction-Fit Technology for TSV, TSX, Trabecular Metal, and Eztetic Implant Systems

The screw is designed to assist in releasing the friction between the Ti-Base and implant when unscrewed. This maintains ZimVie's Friction Fit technology with no need to use an abutment removal tool.



Higher magnification of the virtual cold weld between abutment and implant

¹ Engaging Ti-Base: position of the channel is limited by the internal hex, every 30°. For multi-unit, no restrictions.
² Silicone rings not provided and not sold by ZimVie Dental.
³ Hexalobular screws are required for the ASC solutions.
⁴ Binon PP. The evolution and evaluation of two interference-fit implant interfaces. Postgraduate Dent. 1996;3:3-13
⁵ Collar Heights for Certain and TSV connection Ti-Bases.



GenTek Ti-Bases and Encode® Emergence

Encode Emergence
3-in-1
Healing Abutment
Impression Coping
Scan Body



PLACE

Place a ZimVie Dental Implant with an Encode Emergence Healing Abutment.

HEAL AND SCAN

After tissue maturation, take a digital or traditional impression of the Encode Emergence Healing Abutment and send it to your preferred lab partner.

DECODE AND DESIGN

The laboratory decodes the Encode Emergence Healing Abutment in RealGUIDE® and proceeds with the CAD Design.^{1,2}

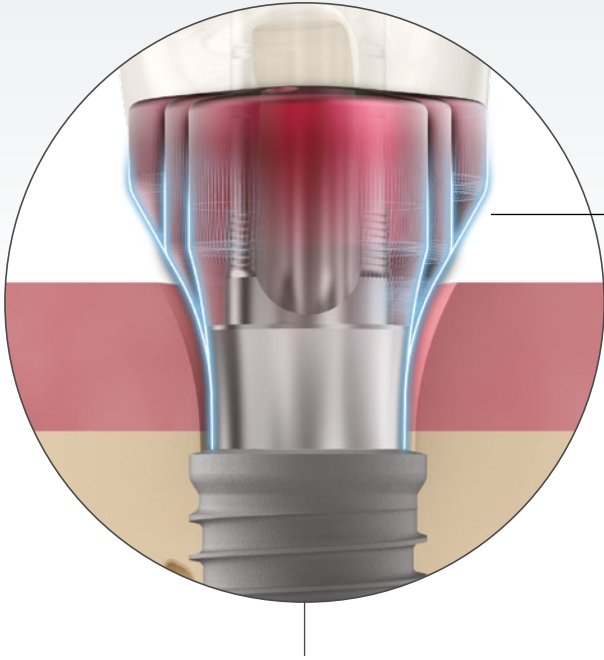
¹ Patient Specific Abutment CAD design requires GenTek Library. GenTek Library can be downloaded for free on RealGUIDE, 3Shape and Dental Wings CAD softwares.

² Duplication possible between the margin of the Ti-Base and the top of the soft tissue for RealGUIDE CAD subscribers.

³ Sub-gingival contours post-decryption of the Encode Emergence Healing Abutments are only visible in RealGUIDE CAD software. This visibility allows the dental lab technician to properly match the contours of the CAD/CAM abutment or GenTek Ti-Base with the contours of the healing abutment used resulting in a highly aesthetic restoration.

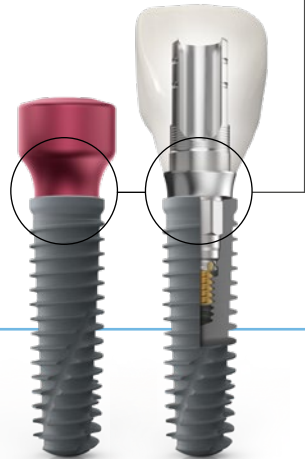


Angulated Screw Channel Ti-Bases mimic the Encode Emergence profiles to maintain soft tissue around the restoration³



COMPATIBLE EMERGENCE PROFILE

Download **FREE** Libraries for Ti-Bases and other components



RESTORE

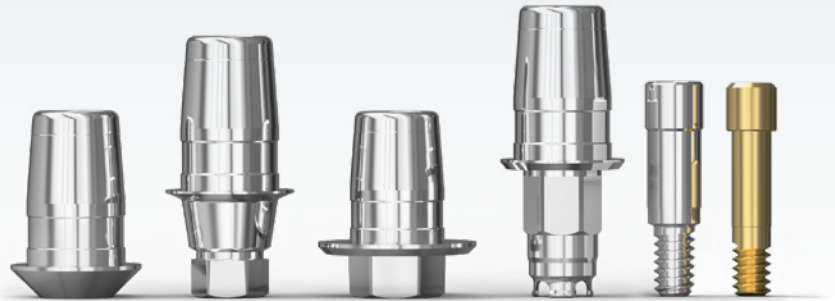
Select the right GenTek Ti-Base to match the patient's anatomy.

SMILE

The finished prosthesis is ready to be placed. You and your patient can enjoy a precise, aesthetic result and above all, a radiant smile!

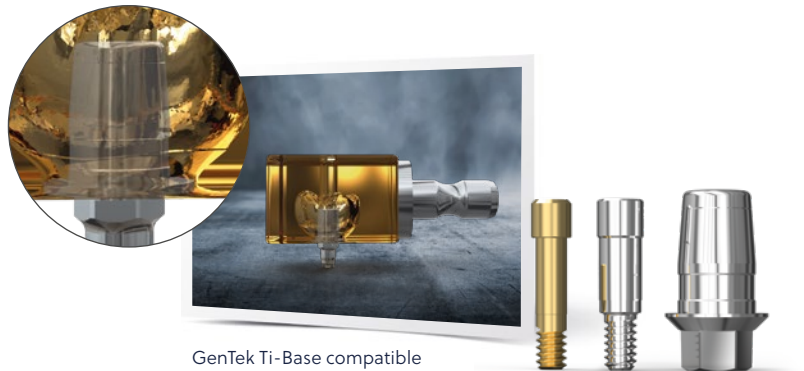


GenTek Ti-Bases with Standard Post



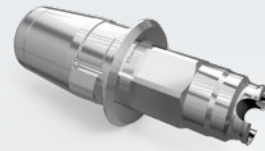
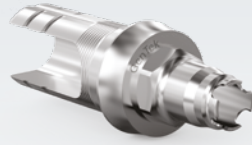
Cerec Compatible GenTek Ti-Base features and benefits:

- High restorative flexibility for both screw- and cement-retained options
- Indicated for use for single-unit, multi-unit, and full-arch restorations utilizing digital or traditional workflows
- 4.7 mm high Ti-Bases are designed to be compatible with Sirona CEREC blocks for CEREC Chairside Milling and in-lab CAD/CAM solutions
- Libraries for Ti-Bases and other components available for RealGUIDE, 3Shape, and Dental Wings CAD
- GenTek branded to indicate a genuine connection.



GenTek Ti-Base compatible with Milling Block

Features by Ti-Base Option



Features	GenTek Ti-Base with Angulated Screw Channel	GenTek Ti-Base with Standard Post
Restorative Platform	TSX / TSV / Trabecular Metal, T3 PRO / Certain, Eztetic	TSX / TSV / Trabecular Metal, T3 PRO / Certain, Eztetic
Sizes	For all implant platforms ¹	For all implant platforms ²
Screw Access Angulations	Yes (up to 25°)	None
Post Height	7 mm with two cutting grooves, allows for 5.7mm and 4.5mm heights	4.7mm post height with one cutting groove at 4.0 mm height
Mimics Encode Emergence Profile	Yes, 1.3 mm and 2.6 mm collar heights for TSX / TSV, TM and T3 PRO / Certain Connection, 1.7 mm and 2.6 mm collar heights for Eztetic Connection	No
Sirona inCoris Meso Block Compatible	No	Yes
Multiple Collar Heights	Yes ²	No
Gluing Screw	Yes	Yes
Packaged with Definitive Retaining Screw	Yes	Yes
Libraries	RealGUIDE, 3Shape, Exocad	RealGUIDE, 3Shape, Exocad

Collar Heights

Compatible Implant System	Engaging/Non-Engaging ASC Ti-Base Connection	ASC Ti-Base Collar Heights (mm)
Certain (Tapered and Parallel Walled) T3, T3 PRO	Engaging (Hexed)	0.3, 1.3, 2.6
	Non-Engaging (Non-Hexed)	0.3, 1.3
TSV, TM, TSX (3.5 mm and 4.5 mm platform)	Engaging (Hexed)	0.3, 1.3, 2.6
	Non-Engaging (Non-Hexed)	0.3, 1.3
Eztetic, TSX (2.9 mm platform)	Engaging (Hexed)	1.0, 1.7, 2.6
	Non-Engaging (Non-Hexed)	1.0, 1.7

¹ Ti-Bases for Certain and TSV Implant Systems. 6.0 mm Ti-Base is not offered for Certain. 5.0mm GenTek Ti-Base can be used on a 6/5 mmD Certain Implant.

² Certain and TSV connections – 0.3 mm, 1.3 mm, and 2.6 mm Eztetic connection collar heights 1.0 mm, 1.75 mm, and 2.6 mm.



GenTek Titanium Pre-Milled Abutment Blanks



GenTek Titanium Pre-Milled Abutment Blanks enable the fabrication of customized titanium abutments without compromising connection quality and restoration performance.

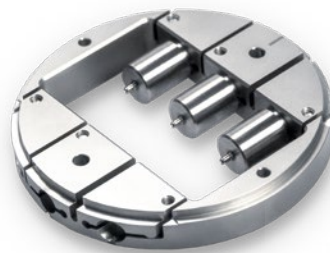


GenTek Titanium Pre-Milled Abutment Blanks main features and benefits:

- The blanks are pre-fabricated with ZimVie genuine connections to ensure an accurate fit and superior performance with the implant connection
- Processing flexibility: Compatible with a variety of ZimVie Pre-Abutment Blank Holders and all milling machines that work with Medentika PreFace® Abutment Holders
- GenTek branded to indicate a genuine connection.



Patient specific abutment can be manufactured using Titanium Pre-Milled Abutment Blank.



GenTek Titanium Pre-Milled Abutment Blanks are compatible with Medentika holders. (CAM update required)



GenTek Pre-Abutment Standard Holder and Pre-Abutment Adapter for GCER Holders.

GenTek Scan Bodies

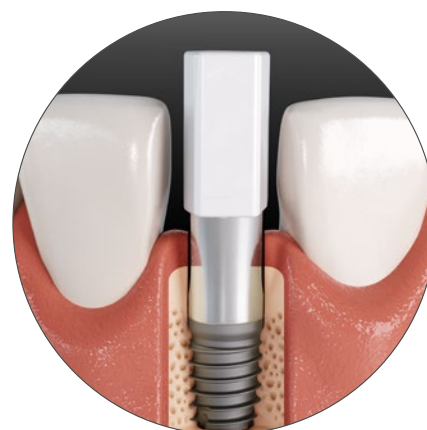
GenTek Scan Body*

A perfect restorative design starts with a perfect scan in every CAD/CAM restoration. GenTek Scan Bodies lay the foundation for a highly precise digitization of the implant position, whether acquired with an intraoral scanner or a desktop scanner.



The GenTek Scan Body design incorporates:

- A genuine titanium connection base to ensure a precise fit with the implant connection for optimal scanning results
- A slim asymmetric design to fit in narrow interproximal spaces
- The straight design on the titanium base of the Scan Body does not exceed the implant platform thereby mitigating the need for bone profiling when the implant is placed no deeper than 3 millimeters sub-crestal
- Dual functioning for intraoral and desktop scanning
- The body is constructed of PEEK material to provide a favorable surface for optical scanners
- The Zfx Torque Wrench is recommended for tightening the GenTek Scan Bodies when used for scanning in the lab. It features a torque control mechanism that ensures proper tightening torque on the lab model
- Requires 0.50 hex driver

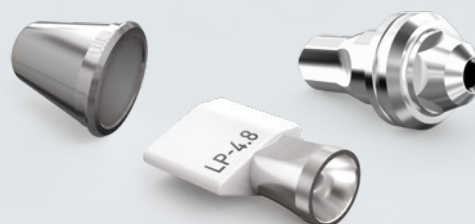


Slim design of the Scan Body is designed for tight spaces and minimizes the need for bone profiling due to the straight design.

GenTek Low Profile Restorative Components

GenTek Low Profile restorative components include a coping, scan body and analog. GenTek Digital Analogs provide an accurate fit for design of the definitive restoration. GenTek Analogs are designed with:

- Two anti-rotation notches and a vertical stop to ensure proper orientation with reduced movement
- A snap in feature and fixation screw for analog positioning and locking all degrees of freedom



* Scan Body also referenced as Scanbody

For more information, visit [ZimVie.com](https://www.zimvie.com)

ZimVie

4555 Riverside Drive
Palm Beach Gardens, FL 33410
Phone: +1-561-776-6700
Fax: +1-561-776-1272
dentalCS@ZimVie.com



Unless otherwise indicated, as referenced herein, all trademarks and intellectual property rights are the property of ZimVie Inc. or an affiliate; and all products are manufactured by one or more of the dental subsidiaries of ZimVie Inc. (Biomet 3i, LLC, Zimmer Dental, Inc., etc.) and marketed and distributed by ZimVie Dental and its authorized marketing partners. GenTek is manufactured by Zfx GmbH, a subsidiary of ZimVie. For additional product information, please refer to the individual product labeling or instructions for use. Product clearance and availability may be limited to certain countries/regions. ZimVie Dental is an authorized distributor of iTero Products which are manufactured by Align Technology, Inc. This material is intended for clinicians only and does not comprise medical advice or recommendations. Distribution to any other recipient is prohibited. This material may not be copied or reprinted without the express written consent of ZimVie. ZV1878 REV A 04/24 ©2024 ZimVie. All rights reserved.

