

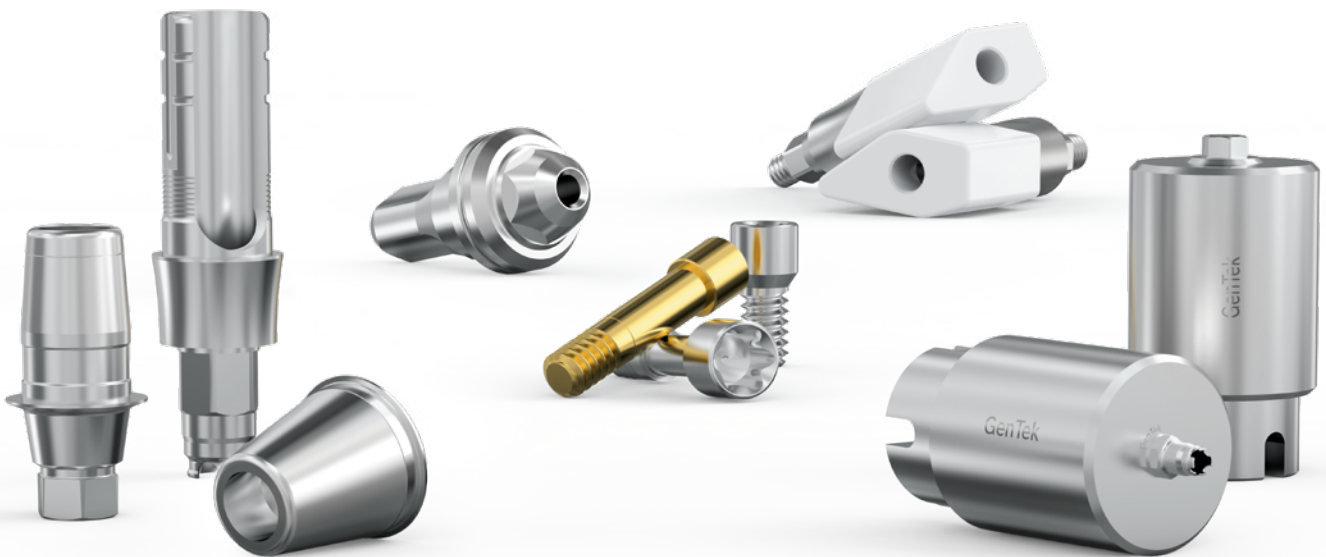


Product Catalog
2024



GenTek®

Genuine Restorative
Components



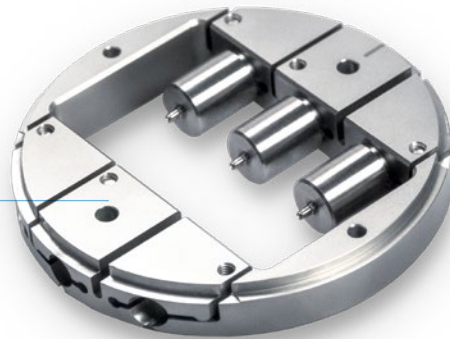


GenTek Open Connectivity

For even more flexibility.

Genuine

GenTek Titanium Pre-Milled Abutment Blanks* are compatible with Medentika® holders (CAM update required).



Flexible

GenTek Angulated Screw Channel Ti-Bases*

Achieve efficiency to your CAD/CAM restoration workflow with a singular Ti-Base that provides flexibility of channel angulation and adjustable post height options (4.5 mm, 5.7 mm, and 7.0 mm).



 **RealGUIDE™**
UNIVERSAL OPEN SYSTEM

exocad

3shape 



Free

Libraries for the GenTek restorative components are available for RealGUIDE®, 3Shape, and Dental Wings CAD software. **Free download at zimvie.com**



SCAN & INFORM
More at
www.zimvie.com

*All digitally designed GenTek custom abutments, superstructures or hybrid abutment crowns are intended to be sent to a validated milling center for manufacture. Visit our website for a list of validated milling centers.

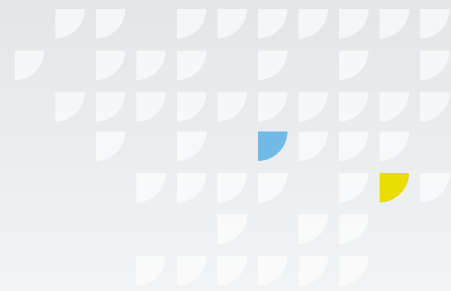






Table of Contents





GenTek Angulated Screw Channel Ti-Bases ¹	4
GenTek Titanium Pre-Milled Abutment Blanks	8
GenTek Ti-Bases with Standard Post	12
GenTek Scan Bodies ²	18
GenTek Restorative Components –	
ZimVie Low Profile Abutment Compatible	21

Legend

∅ Restorative Platform (mm)
Color code for Eztetic[®],
TSX[®], TSV[®]/TM[®]

	2.9 mmD
	3.5 mmD
	4.5 mmD
	5.7 mmD

∅ Restorative Platform (mm)
Color code for Certain[®]

	3.4 mm
	4.1 mm
	5.0 mm
	6.0 mm

GenTek Calibration Tool for Milling Machines

Description	Part No.
GenTek Calibration Abutment Blank	ZFX18-CALIB



GenTek Titanium Pre-Milled Abutment Blank Holder

Description	Part No.
Zfx Pre-Abutment Blank Holder, Standard	ZFX02PMSH



Milling Block Compatibility Guide³

ZimVie Implant System	Implant Platform Diameter (mm)	GenTek Engaging Ti-Base Abutment Platform Diameter (mm)	Compatible Block
Certain	3.4	3.1	S
	4.1	4.1	L
	5.0	5.0	
	6.0		
TSV/TM	3.5	3.5	L
	4.5	4.5	
	5.7	5.7	
TSX	2.9	2.9	S
	3.5	3.5	L
	4.5	4.5	
Eztetic	2.9	2.9	S



¹ Ti-Base also referenced as TiBase

² Scan Body also referenced as Scanbody

³ Only compatible with Engaging Ti-Base Abutments that do not contain Angled Screw Channel

GenTek Angulated Screw Channel Ti-Bases

Certain Restorative Platform Connection

ASC Ti-Base Engaging

incl. Gold-Tite Hexalobular Screw and Gluing Screw



Post Height ¹ (mm)	Restorative Platform (mm)	Collar Height (mm)	Part No.
7	3.4	0.3	ZFX11ZB-CE34ASZ03E
		1.3	ZFX11ZB-CE34AS13E
		2.6	ZFX11ZB-CE34AS26E
	4.1	0.3	ZFX11ZB-CE41ASZ03E
		1.3	ZFX11ZB-CE41AS13E
		2.6	ZFX11ZB-CE41AS26E
	5.0	0.3	ZFX11ZB-CE50ASZ03E
		1.3	ZFX11ZB-CE50AS13E
		2.6	ZFX11ZB-CE50AS26E

Gold-Tite Hexalobular Screw



Part No.	
ZFX09-ZB-CE-HLGTE	20 Ncm

Hexalobular Try-In Screw



Part No.	
ZFX09-ZB-CE-HLTISE	Hand-tighten

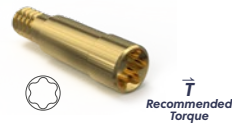
ASC Ti-Base Non-Engaging

incl. Gold-Tite Hexalobular Screw and Gluing Screw



Post Height ¹ (mm)	Restorative Platform (mm)	Collar Height (mm)	Part No.
7	3.4	0.3	ZFX11ZB-CE34ASZ03N
		1.3	ZFX11ZB-CE34AS13N
	4.1	0.3	ZFX11ZB-CE41ASZ03N
		1.3	ZFX11ZB-CE41AS13N
	5.0	0.3	ZFX11ZB-CE50ASZ03N
		1.3	ZFX11ZB-CE50AS13N

Gold-Tite Hexalobular Screw



Part No.	
ZFX09-ZB-CE-HLGTN	20 Ncm

Hexalobular Try-In Screw



Part No.	
ZFX09-ZB-CE-HLTISN	Hand-tighten

Eztetic and TSX² Restorative Platform Connection

ASC Ti-Base Engaging

incl. Hexalobular Retaining Screw and Gluing Screw



Post Height ¹ (mm)	Restorative Platform (mm)	Collar Height (mm)	Part No.
7	2.9	1.0	ZFX11ZB-EZ29AS10E
		1.7	ZFX11ZB-EZ29AS17E
		2.6	ZFX11ZB-EZ29AS26E

Hexalobular Retaining Screw



Part No.	
ZFX09-ZB-EZ-HLRS	30 Ncm

ASC Ti-Base Non-Engaging

incl. Hexalobular Retaining Screw and Gluing Screw



Post Height ² (mm)	Restorative Platform (mm)	Collar Height (mm)	Part No.
7	2.9	1.0	ZFX11ZB-EZ29AS10N
		1.7	ZFX11ZB-EZ29AS17N

Hexalobular Retaining Screw



Part No.	
ZFX09-ZB-EZ-HLRS	30 Ncm

¹ Various groove heights at 4.5, 5.7 mm
² Only for 2.9 mm Restorative Platform

GenTek Angulated Screw Channel Ti-Bases

TSX, Tapered Screw-Vent, and Trabecular Metal Restorative Platform Connections

ASC Ti-Base Engaging

incl. Hexalobular Retaining Screw and Gluing Screw



Post Height ² (mm)	Restorative Platform (mm)	Collar Height (mm)	Part No.	
7	3.5	0.3	ZFX11ZB-TSV35AS03E	
		1.3	ZFX11ZB-TSV35AS13E	
		2.6	ZFX11ZB-TSV35AS26E	
	4.5	4.5	0.3	ZFX11ZB-TSV45AS03E
			1.3	ZFX11ZB-TSV45AS13E
			2.6	ZFX11ZB-TSV45AS26E
	5.7 ¹	5.7 ¹	0.3	ZFX11ZB-TSV57AS03E
			1.3	ZFX11ZB-TSV57AS13E
			2.6	ZFX11ZB-TSV57AS26E

Hexalobular Retaining Screw



Part No.	
ZFX09-ZB-TSV-HLRS	30 Ncm

ASC Ti-Base Non-Engaging

incl. Hexalobular Retaining Screw and Gluing Screw



Post Height ² (mm)	Restorative Platform (mm)	Collar Height (mm)	Part No.	
7	3.5	0.3	ZFX11ZB-TSV35AS03N	
		1.3	ZFX11ZB-TSV35AS13N	
	4.5	0.3	ZFX11ZB-TSV45AS03N	
		1.3	ZFX11ZB-TSV45AS13N	
	5.7 ¹	5.7 ¹	1.3	ZFX11ZB-TSV57AS13N
			0.3	ZFX11ZB-TSV57AS03N

Hexalobular Retaining Screw



Part No.	
ZFX09-ZB-TSV-HLRS	30 Ncm

Tools for GenTek Angulated Screw Channel Ti-Bases

Torque Indicating Wrench



Description	Part No.
Low Torque Indicating Ratchet Wrench	L-TIRW
L-TIRW Standard ISO 1797 Adapter	C9980



Description	Part No.
Torque Wrench Restorative	TWR

Hexalobular Screwdriver for Hexalobular Retaining Screw



Length (mm)	Description	Part No.
21	Compatible with L-TIRW	ZFX02HLD21
24		TASCD24
28		ZFX02HLD28
30		TASCD30
36		ZFX02HLD36



Length (mm)	Description	Part No.
24	Compatible with TWR	TASCT24
30		TASCT30

Certain QuickSeat® Activator Tool



Part No.
IQSA01

Low Torque Indicating Ratchet Wrench Kit³ incl. Adapter, Tray, and Driver Tips



Description	Part No.
<ul style="list-style-type: none"> L-TIRW: Low Torque Indicating Ratchet Wrench C9980: L-TIRW Standard ISO 1797 Adapter⁴ RTI20351R: Torque Indicating Ratchet Wrench Tray RASH3N: Narrow Right Angle Large Hexed Driver Tip, 24 mm RASQ3N: Narrow Right Angle Square Driver Tip, 24 mm 	L-TIRWK

¹ Not compatible with TSX Restorative Platform
² Various groove heights at 4.5, 5.7 mm
³ Components also sold separately
⁴ Short ISO 1797 adapter also available (C9981)
⁵ C9980 can be ordered separately

GenTek Titanium Pre-Milled Abutment Blanks

Certain Restorative Platform Connection

Titanium Pre-Milled Abutment Blank *incl. Gold-Tite Screw*



Restorative Platform (mm)	Part No.
3.4	ZFX18-ZB-CE-34
4.1, 5.0, 6.0	ZFX18-ZB-CE-4160

Gold-Tite Screw



\bar{T}
Recommended Torque

Part No.	
IUNIHG	20 Ncm

Try-In Screw



\bar{T}
Recommended Torque

Part No.	
IUNITS	Hand-tighten



Hex Driver, Driver Tip (0.048 Hex)
for Gold-Tite and Try-In Screws



Description	Part No.
Narrow Posterior Hex Driver, 17 mmL	PHD02N
Narrow Standard Hex Driver, 24 mmL	PHD03N
Narrow Right Angle Hex Driver Tip, 24 mmL	RASH3N
Narrow Right Angle Hex Driver Tip, 30 mmL	RASH8N

Low Torque Indicating Ratchet Wrench Kit¹
incl. Adapter, Tray, and Driver Tips



Description	Part No.
<ul style="list-style-type: none"> L-TIRW: Low Torque Indicating Ratchet Wrench C9980: L-TIRW Standard ISO 1797 Adapter ^{2,3} RTI2035TR: Torque Indicating Ratchet Wrench Tray RASH3N: Narrow Right Angle Large Hexed Driver Tip, 24 mm RASQ3N: Narrow Right Angle Square Driver Tip, 24 mm 	L-TIRWK

Certain QuickSeat Activator Tool



Part No.
IQSA01

¹Components also sold separately

²Short ISO 1797 adapter also available (C9981)

³C9980 can be ordered separately

GenTek Titanium Pre-Milled Abutment Blanks

Eztetic and TSX¹ Restorative Platform Connection

Titanium Pre-Milled Abutment Blank *incl. Retaining Screw*



Restorative Platform (mm)	Part No.
2.9	ZFX18-ZB-EZ-29

Retaining Screw



Part No.	
CUAS	30 Ncm

Hex Driver, Latch-Lock Hex Driver (0.050 Hex) *for Retaining Screws*



Description	Part No.
Hex Driver, Short, with GemLock® Retention 1.25 mmD, 22 mmL	HXGR1.25 ²
Hex Driver, Long, with GemLock Retention 1.25 mmD, 30 mmL	HXLGR1.25 ²
Latch-Lock Hex Driver for Surgical and Prosthetic Screws, Short 1.25 mmD, 23 mmL <i>(may require reduction hand piece)</i>	HX1.25D
Latch-Lock Hex Driver for Surgical and Prosthetic Screws, Long 1.25 mmD, 26 mmL <i>(may require reduction hand piece)</i>	HXL1.25D

Removal Tool



Description	Part No.
Removal Tool for Abutments	CLRT2
Removal Tool for Narrow Platform for Abutments	ZFX02-RTNP

Torque Wrench Tool *for Abutment Screws*



Description	Part No.
Torque Wrench Restorative	TWR
Torque Wrench Driver, Short	TW1.25
Torque Wrench Driver, Long	TW1.25L

TSX, Tapered Screw-Vent, and Trabecular Metal Restorative Platform Connection

Titanium Pre-Milled Abutment Blank *incl. Retaining Screw*



Restorative Platform (mm)	Part No.
3.5	ZFX18-ZB-TSV-35
4.5	ZFX18-ZB-TSV-45
5.7 ¹	ZFX18-ZB-TSV-57

Retaining Screw



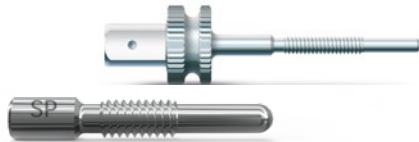
Part No.	
MHLAS	30 Ncm

Hex Driver, Latch-Lock Hex Driver (0.050 Hex) *for Retaining Screws and Intraoral Scan Bodies*



Description	Part No.
Hex Driver, Short, with GemLock Retention 1.25 mmD, 22 mmL	HXGR1.25 ³
Hex Driver, Long, with GemLock Retention 1.25 mmD, 30 mmL	HXLGR1.25 ³
Latch-Lock Hex Driver for Surgical and Prosthetic Screws, Short 1.25 mmD, 23 mmL <i>(may require reduction hand piece)</i>	HX1.25D
Latch-Lock Hex Driver for Surgical and Prosthetic Screws, Long 1.25 mmD, 26 mmL <i>(may require reduction hand piece)</i>	HXL1.25D

Removal Tool



Description	Part No.
Removal Tool for Abutments	TLRT2
Removal Tool Standard Platform for Abutments	ZFX02-RTSP

Torque Wrench Tool *for Abutment Screws*



Description	Part No.
Torque Wrench Restorative	TWR
Torque Wrench Driver, Short	TW1.25
Torque Wrench Driver, Long	TW1.25L

¹ Only for TSX 2.9 mm Restorative Platform

² Compatible with Removal Tool Narrow Platform

³ Compatible with Removal Tool Standard Platform

⁴ Not compatible with TSX Restorative Platform

GenTek Ti-Bases with Standard Post (Sirona inCoris Meso Block/Cerec Compatible)

Certain Restorative Platform Connection

Single-Unit Restorative Components

Ti-Base Engaging
incl. Gold-Tite and Gluing Screws



Height (mm) ¹	Restorative Platform (mm)	Part No.
4.7	3.4	ZFX11-ZB-CE-3447-ES
	4.1	ZFX11-ZB-CE-4147-EL
	5.0	ZFX11-ZB-CE-5047-EL

Gold-Tite Screw

Try-In Screw



Part No.		Part No.	
IUNIHG	20 Ncm	IUNITS	Hand-tighten

Multi-Unit Restorative Components

Ti-Base Non-Engaging
incl. Gold-Tite and Gluing Screws



Height (mm) ¹	Restorative Platform (mm)	Part No.
4.7	3.4	ZFX11-ZB-CE-3447-NES
	4.1	ZFX11-ZB-CE-4147-NEL
	5.0	ZFX11-ZB-CE-5047-NEL

Gold-Tite Screw

Try-In Screw



Part No.		Part No.	
ILRGHG	20 Ncm	ZFX09-ZB-CE-NHTIS	Hand-tighten

Hex Driver, Driver Tip (0.048 Hex)
for Gold-Tite and Try-In Screws



Description	Part No.
Narrow Posterior Hex Driver, 17 mmL	PHD02N
Narrow Standard Hex Driver, 24 mmL	PHD03N
Narrow Right Angle Hex Driver Tip, 24 mmL	RASH3N
Narrow Right Angle Hex Driver Tip, 30 mmL	RASH8N

Low Torque Indicating Ratchet Wrench Kit²
incl. Adapter, Tray, and Driver Tips



Description	Part No.
<ul style="list-style-type: none"> L-TIRW: Low Torque Indicating Ratchet Wrench C9980: L-TIRW Standard ISO 1797 Adapter^{3,4} RTI2035TR: Torque Indicating Ratchet Wrench Tray RASH3N: Narrow Right Angle Large Hexed Driver Tip, 24 mm RASQ3N: Narrow Right Angle Square Driver Tip, 24 mm 	L-TIRWK

Certain QuickSeat[®] Activator Tool



Part No.
IQSA01

¹4 mm groove indicating minimal allowed post height

²Components also sold separately

³Short ISO 1797 adapter also available (C9981)

⁴C9980 can be ordered separately

GenTek Ti-Bases with Standard Post (Sirona inCoris Meso Block/Cerec Compatible)

Eztetic and TSX¹ Restorative Platform Connection

Single-Unit Restorative Components

Ti-Base Engaging
incl. Retaining and Gluing Screws



Height (mm) ²	Restorative Platform (mm)	Part No.
4.7	2.9	ZFX11-ZB-EZ-2947-ES

Retaining Screw



Part No.	
CUAS	30 Ncm

Multi-Unit Restorative Components

Ti-Base Non-Engaging
incl. Retaining and Gluing Screws



Height (mm) ²	Restorative Platform (mm)	Part No.
4.7	2.9	ZFX11-ZB-EZ-2947-NES

Retaining Screw



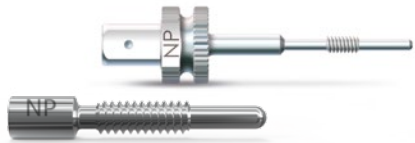
Part No.	
CUAS	30 Ncm

Hex Driver, Latch-Lock Hex Driver (0.050 Hex)
for Retaining Screws



Description	Part No.
Hex Driver, Short, with GemLock Retention 1.25 mmD, 22 mmL	HXGR1.25 ³
Hex Driver, Long, with GemLock Retention 1.25 mmD, 30 mmL	HXLGR1.25 ³
Latch-Lock Hex Driver for Surgical and Prosthetic Screws, Short 1.25 mmD, 23 mmL (may require reduction hand piece)	HX1.25D ²
Latch-Lock Hex Driver for Surgical and Prosthetic Screws, Long 1.25 mmD, 26 mmL (may require reduction hand piece)	HXL1.25D ²

Removal Tool



Description	Part No.
Removal Tool for Abutments	CLRT2
Removal Tool for Narrow Platform for Abutments	ZFX02-RTNP

Torque Wrench Tool
for Abutment Screws



Description	Part No.
Torque Wrench Restorative	TWR
Torque Wrench Driver, Short	TW1.25
Torque Wrench Driver, Long	TW1.25L

¹ Only for TSX 2.9 mm Restorative Platform
² 4 mm groove indicating minimal allowed post height
³ Compatible with Removal Tool Narrow Platform

GenTek Ti-Bases with Standard Post (Sirona inCoris Meso Block/Cerec Compatible)

TSX, Tapered Screw-Vent, and Trabecular Metal Restorative Platform Connections

Single-Unit Restorative Components

Ti-Base Engaging¹
incl. Retaining and Gluing Screws



Height (mm)	Restorative Platform (mm)	Part No.
4.7	3.5	ZFX11-ZB-TSV-3547-EL
	4.5	ZFX11-ZB-TSV-4547-EL
	5.7 ²	ZFX11-ZB-TSV-5747-EL

Retaining Screw



Part No.	
MHLAS	30 Ncm

Multi-Unit Restorative Components

Ti-Base Non-Engaging¹
incl. Retaining and Gluing Screws



Height (mm)	Restorative Platform (mm)	Part No.
4.7	3.5	ZFX11-ZB-TSV-3547-NEL
	4.5	ZFX11-ZB-TSV-4547-NEL
	5.7 ²	ZFX11-ZB-TSV-5747-NEL

Retaining Screw



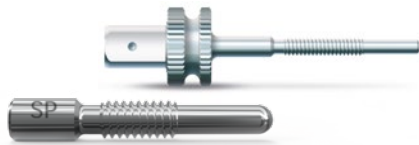
Part No.	
MHLAS	30 Ncm

Hex Driver, Latch-Lock Hex Driver (0.050 Hex)
for Retaining Screws



Description	Part No.
Hex Driver, Short, with GemLock Retention 1.25 mmD, 22 mmL	HXGR1.25 ³
Hex Driver, Long, with GemLock Retention 1.25 mmD, 30 mmL	HXLGR1.25 ³
Latch-Lock Hex Driver for Surgical and Prosthetic Screws, Short 1.25 mmD, 23 mmL (may require reduction hand piece)	HX1.25D
Latch-Lock Hex Driver for Surgical and Prosthetic Screws, Long 1.25 mmD, 26 mmL (may require reduction hand piece)	HXL1.25D

Removal Tool



Description	Part No.
Removal Tool for Abutments	TLRT2
Removal Tool Standard Platform for Abutments	ZFX02-RTSP

Torque Wrench Tool
for Abutment Screws

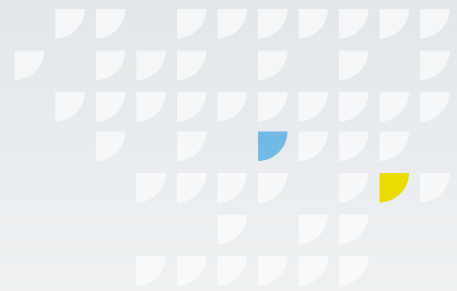


Description	Part No.
Torque Wrench Restorative	TWR
Torque Wrench Driver, Short	TW1.25
Torque Wrench Driver, Long	TW1.25L ²

¹4 mm groove indicating minimal allowed post height

²Not compatible with TSX Restorative Platform

³Compatible with Removal Tool Standard Platform



Certain Restorative Platform Connection

Scan Body
incl. Screw



Torque Wrench (lab use only)
for Scan Bodies



Restorative Platform (mm)	Part No.	Recommended Torque	Part No.
3.4	ZFX05Z-ZB-CE-34	Hand-tighten ¹	ZFX02002067
4.1	ZFX05Z-ZB-CE-41		
5.0	ZFX05Z-ZB-CE-50		
6.0	ZFX05Z-ZB-CE-60		

Hex Driver, Latch-Lock Hex Driver (0.050 Hex)
for Scan Bodies



Description	Part No.
Hex Driver, Short, with GemLock Retention 1.25 mmD, 22 mmL	HXGR1.25
Hex Driver, Long, with GemLock Retention 1.25 mmD, 30 mmL	HXLGR1.25
Latch-Lock Hex Driver for Surgical and Prosthetic Screws, Short 1.25 mmD, 23 mmL (may require reduction hand piece)	HX1.25D
Latch-Lock Hex Driver for Surgical and Prosthetic Screws, Long 1.25 mmD, 26 mmL (may require reduction hand piece)	HXL1.25D

Eztetic and TSX² Restorative Platform Connection

Scan Body incl. Screw



↑
Recommended
Torque

Torque Wrench (lab use only) for Scan Bodies



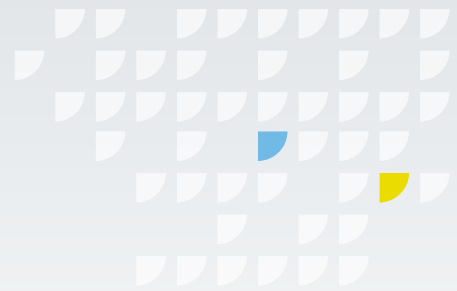
Restorative Platform (mm)	Part No.	Recommended Torque	Part No.
2.9	ZFX05Z-ZB-EZ-29	Hand-tighten ¹	ZFX02002067

Hex Driver, Latch-Lock Hex Driver (0.050 Hex) for Scan Bodies



Description	Part No.
Hex Driver, Short, with GemLock Retention 1.25 mmD, 22 mmL	HXGR1.25
Hex Driver, Long, with GemLock Retention 1.25 mmD, 30 mmL	HXLGR1.25
Latch-Lock Hex Driver for Surgical and Prosthetic Screws, Short 1.25 mmD, 23 mmL (may require reduction hand piece)	HX1.25D
Latch-Lock Hex Driver for Surgical and Prosthetic Screws, Long 1.25 mmD, 26 mmL (may require reduction hand piece)	HXL1.25D

¹ Minimum torque of 5 Ncm and max of 15 Ncm
² Only for TSX 2.9 mm Restorative Platform



TSX, Tapered Screw-Vent, and Trabecular Metal Restorative Platform Connection

Scan Body
incl. Screw

Torque Wrench (lab use only)
for Scan Bodies



Restorative Platform (mm)	Part No.	Recommended Torque	Part No.
3.5	ZFX05Z-ZB-TSV-35	Hand-tighten ¹	ZFX02002067
4.5	ZFX05Z-ZB-TSV-45		
5.7 ²	ZFX05Z-ZB-TSV-57		

Hex Driver, Latch-Lock Hex Driver (0.050 Hex)
for Scan Bodies



Description	Part No.
Hex Driver, Short, with GemLock Retention 1.25 mmD, 22 mmL	HXGR1.25
Hex Driver, Long, with GemLock Retention 1.25 mmD, 30 mmL	HXLGR1.25
Latch-Lock Hex Driver for Surgical and Prosthetic Screws, Short 1.25 mmD, 23 mmL (may require reduction hand piece)	HX1.25D
Latch-Lock Hex Driver for Surgical and Prosthetic Screws, Long 1.25 mmD, 26 mmL (may require reduction hand piece)	HXL1.25D

GenTek Restorative Components ZimVie Low Profile Abutment Compatible

Low Profile Abutment Restorative Platform

Multi-Unit Restorative Components

Ti Prosthetic Base Coping *incl. Gold-Tite and Gluing Screws*



Height (mm)	Restorative Platform (mm)	Part No.
5.0	4.8	ZFX11-ZB-LP-48-US

Gold-Tite Screw

Try-In Screw



Part No.		Part No.
LPCGSH	10 Ncm	ZFX09-ZB-LP-RS
		Hand-tighten

Hex Driver, Driver Tip (0.048 Hex) *for Gold-Tite Screws and Try-In Screws*



Description	Part No.
Narrow Posterior Hex Driver, 17 mmL	PHD02N
Narrow Standard Hex Driver, 24 mmL	PHD03N
Narrow Right Angle Hex Driver Tip, 24 mmL	RASH3N
Narrow Right Angle Hex Driver Tip, 30 mmL	RASH8N

Low Torque Indicating Ratchet Wrench Kit³ *incl. Adapter, Tray, and Driver Tips*

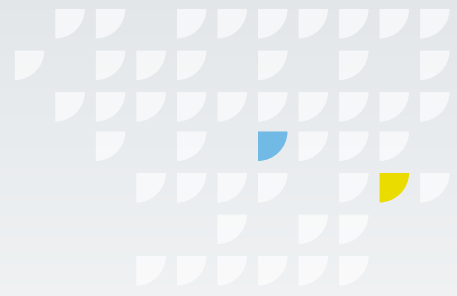


Description	Part No.
<ul style="list-style-type: none"> L-TIRW: Low Torque Indicating Ratchet Wrench C9980: L-TIRW Standard ISO 1797 Adapter⁶¹⁷ RTI2035TR: Torque Indicating Ratchet Wrench Tray RASH3N: Narrow Right Angle Large Hexed Driver Tip, 24 mm RASQ3N: Narrow Right Angle Square Driver Tip, 24 mm 	L-TIRWK

¹ Minimum torque of 5 Ncm and max of 15 Ncm

² Not compatible with TSX Restorative Platform

³ Components also sold separately



GenTek Restorative Components ZimVie Low Profile Abutment Compatible

GenTek Scan Body

Scan Body *incl. Screw*



↑
Recommended
Torque

Restorative Platform (mm)	Part No.	Recommended Torque
4.8	ZFX05Z-ZB-LP-48	Hand-tighten ¹

Torque Wrench (lab use only) *for Scan Bodies*



Part No.
ZFX02002067

Hex Driver, Latch-Lock Hex Driver (0.050 Hex) *for Scan Bodies*



Description	Part No.
Hex Driver, Short, with GemLock Retention 1.25 mmD, 22 mmL	HXGR1.25
Hex Driver, Long, with GemLock Retention 1.25 mmD, 30 mmL	HXLGR1.25
Latch-Lock Hex Driver for Surgical and Prosthetic Screws, Short 1.25 mmD, 23 mmL <i>(may require reduction hand piece)</i>	HX1.25D
Latch-Lock Hex Driver for Surgical and Prosthetic Screws, Long 1.25 mmD, 26 mmL <i>(may require reduction hand piece)</i>	HXL1.25D

GenTek Analog

Analog
incl. Screw



T
Recommended
Torque

Restorative Platform (mm)	Part No.	Hand-tighten ¹
4.8	ZFX15Z-ZB-LP-48	Hand-tighten ¹

Digital Analog Fixation Screw
(4 screws in one pack)



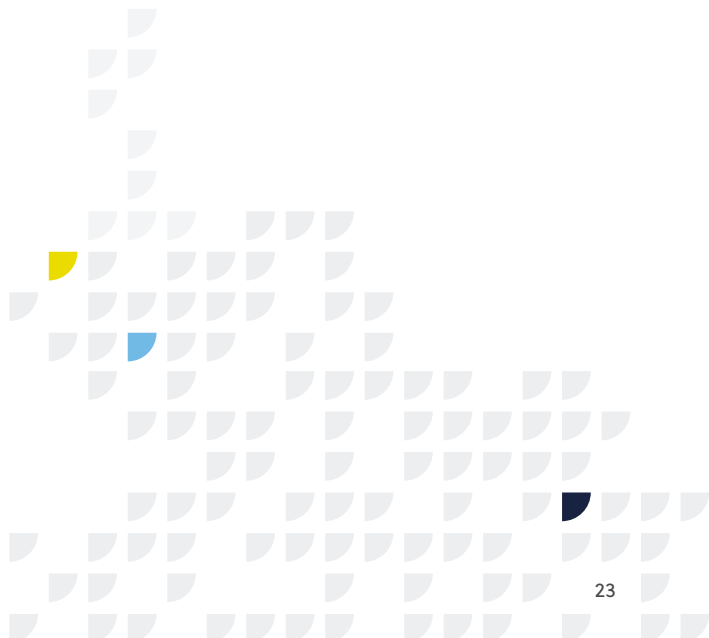
Part No.	Hand-tighten ¹
ZFX15Z-FS	Hand-tighten ¹

Hex Driver
for Scan Bodies



Description	Part No.
Hex Driver, Short, with GemLock Retention 1.25 mmD, 22 mmL	HXGR1.25
Hex Driver, Long, with GemLock Retention 1.25 mmD, 30 mmL	HXLGR1.25

¹ Minimum of 5Ncm; Maximum of 15Ncm.
Refer to Instruction Manual for more information.



For more information, visit [ZimVie.com](https://www.zimvie.com)

ZimVie

4555 Riverside Drive
Palm Beach Gardens, FL 33410
Phone: +1-561-776-6700
Fax: +1-561-776-1272
dentalCS@ZimVie.com



Unless otherwise indicated, as referenced herein, all trademarks and intellectual property rights are the property of ZimVie Inc. or an affiliate; and all products are manufactured by one or more of the dental subsidiaries of ZimVie Inc. (Biomet 3i, LLC, Zimmer Dental, Inc., etc.) and marketed and distributed by ZimVie Dental and its authorized marketing partners. GenTek is manufactured by Zfx GmbH, a subsidiary of ZimVie. For additional product information, please refer to the individual product labeling or instructions for use. Product clearance and availability may be limited to certain countries/regions. This material is intended for clinicians only and does not comprise medical advice or recommendations. Distribution to any other recipient is prohibited. This material may not be copied or reprinted without the express written consent of ZimVie.



ZVINST0191 REV A 04/24 ©2024 ZimVie. All rights reserved.